

In Lisa J. Mc Intyre (ed.), 1999, *The Practical Aesthetic: Readings in Sociology*
Mountain View, CA: Mayfield, Pp. 194-204

Suspended Identity

Identity Transformation in a Maximum Security Prison

Thomas J. Schmid and Richard S. Jones

Schmid and Jones look closely at the resocialization process that new prison inmates undergo—but from the point of view of the prisoner and his concerns about his identity. As you read this article, consider how experiences in this sort of total institution differ from those undergone by men in boot camp.

... A prison sentence constitutes a "massive assault" on the identity of those imprisoned (Berger 1963, 100-101). This assault is especially severe on first-time inmates, and we might expect radical identity changes to ensue from their imprisonment. At the same time, a prisoner's awareness of the challenge to his identity affords some measure of protection against it. As part of an ethnographic analysis of the prison experiences of first-time, short-term inmates, this article presents an identity transformation model that differs both from the gradual transformation processes that characterize most adult identity changes and from such radical transformation processes as brainwashing or conversion.

Data for the study are derived principally from ten months of participant observation at a maximum security prison for men in the upper midwest of the United States. One of the authors was an inmate serving a felony sentence for one year and one day, while the other participated in the study as an outside observer. Relying on traditional ethnographic data collection and analysis techniques, this approach offered us general observations of hundreds of prisoners, and extensive field-

notes that were based on repeated, often daily, contacts with about fifty inmates, as well as on personal relationships established with a smaller number of inmates. We subsequently returned to the prison to conduct focused interviews with other prisoners; using information provided by prison officials, we were able to identify and interview twenty additional first-time inmates who were serving sentences of two years or less. See Schmid and Jones (1987) for further description of this study.

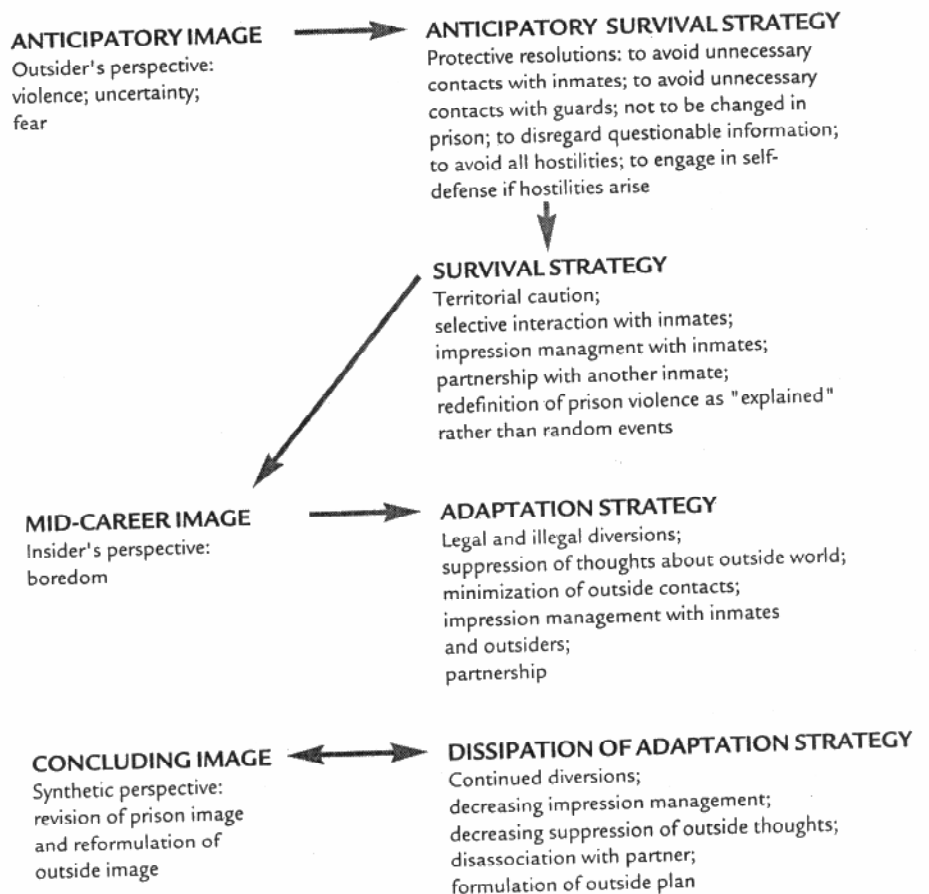
Three interrelated research questions guided our analysis: How do first-time, short-term inmates define the prison world, and how do their definitions change during their prison careers? How do these inmates adapt to the prison world, and how do their adaptation strategies change during their prison careers? How do their self-definitions change during their prison careers? Our analyses of the first two questions are presented in detail elsewhere (Schmid and Jones 1987, 1990); an abbreviated outline of these analyses, to which we will allude throughout this article, is presented in Figure 1. The identity transformation model presented here, based on our analysis of the third question, is outlined in Figure 2.

Figure 1 Prison and Strategies of Inmates

Preprison

Our data s
have little
prison, ex
convicted
"criminal"
They begi
incomplet
prison is
stands in
social wo
nated by t
inmates a
ings, with
mon. The

Figure 1 Prison Images and Strategies of New Inmates



Preprison Identity

Our data suggest that the inmates we studied have little in common before their arrival at prison, except their conventionality. Although convicted of felonies, most do not possess "criminal" identities (cf. Irwin 1970, 29-34). They begin their sentences with only a vague, incomplete image (Boulding 1961) of what prison is like, but an image that nonetheless stands in contrast to how they view their own social worlds. Their prison image is dominated by the theme of violence: they see prison inmates as violent, hostile, alien human beings, with whom they have nothing in common. They have several specific fears about

what will happen to them in prison, including fears of assault, rape, and death. They are also concerned about their identities, fearing that—if they survive prison at all—they are in danger of changing in prison, either through the intentional efforts of rehabilitation personnel or through the unavoidable hardening effects of the prison environment. Acting on this imagery (Blumer 1969)—or, more precisely, on the inconsonance of their self-images with this prison image—they develop an anticipatory survival strategy (see Figure 1) that consists primarily of protective resolutions: a resolve to avoid all hostilities; a resolve to avoid all nonessential contacts with inmates and guards; a resolve to defend themselves in any

prison in-
concerns
this sort

peated, often daily,
mates, as well as
established with a
. We subsequently
conduct focused in-
ers; using informa-
cials, we were able
twenty additional
serving sentences
Schmid and Jones
n of this study.
h questions guided
ime, short-term in-
orld, and how do
uring their prison
ates adapt to the
o their adaptation
eir prison careers?
ns change during
nalyzes of the first
ed in detail else-
(1987, 1990); an ab-
nalyzes, to which
this article, is pre-
ity transformation
l on our analysis of
d in Figure 2.

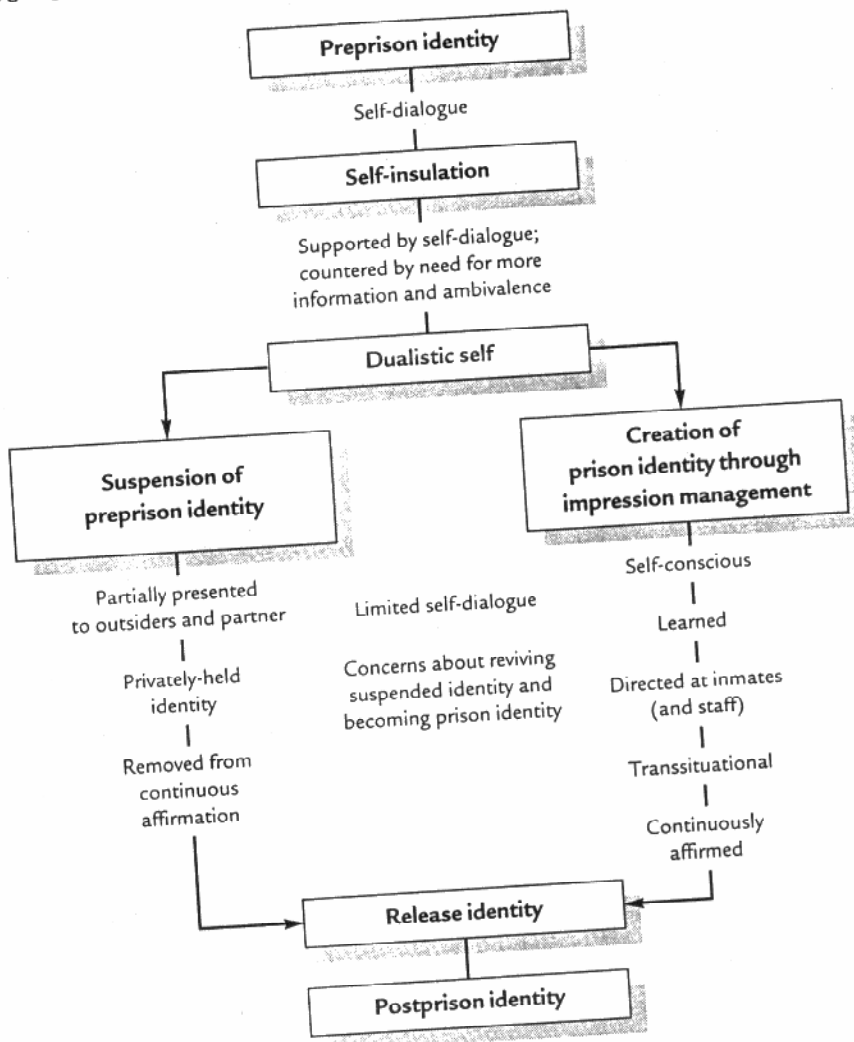


Figure 2 Suspended Identity Dialectic

way possible; and a resolve not to change, or to be changed, in prison.

A felon's image and strategy are formulated through a running self-dialogue, a heightened state of reflexive awareness (Lewis 1979) through which he ruminates about his past behavior and motives, and imaginatively projects himself into the prison world. This self-dialogue begins shortly after his arrest, continues intermittently during his trial or court

hearings, and becomes especially intense at the time of his transfer to prison.

You start taking a review—it's almost like your life is passing before your eyes. You wonder how in the heck you got to this point and, you know, what are—what's your family gonna think about it—your friends, all the talk, and how are you going to deal with that—and the kids, you know, how are they gonna react to it? . . . All those things run through your

head. . . The time in my li controlling n

My first nigh kicking mys the joint. It v thought a lo the good-by of months, I sticking by 1 Am I going for my life? for a year? 1 same when

His self-dialo tensive self-a thus, at the s to change, I introspective identity tran

Self-Insula

A felon's se initial week: it remains struggling t nance of hi and his pre ferences in t inmates nov facts their ic self-dialogu discontinui inmates, er dations an (cf. Garfink 1958) and t tive on the viously the pened to t else as we every first self. They

Figure 2 *Suspended Identity Dialectic*

head. . . . The total loss of control—the first time in my life that some other people were controlling my life.

. . . .

My first night in the joint was spent mainly on kicking myself in the butt for putting myself in the joint. It was a very emotional evening. I thought a lot about all my friends and family, the good-byes, the things we did the last couple of months, how good they had been to me, sticking by me. I also thought about my fears: Am I going to go crazy? Will I end up fighting for my life? How am I going to survive in here for a year? Will I change? Will things be the same when I get out?

His self-dialogue is also typically the most extensive self-assessment he has ever conducted; thus, at the same time that he is resolving not to change, he is also initiating the kind of introspective analysis that is essential to any identity transformation process.

Self-Insulation

A felon's self-dialogue continues during the initial weeks and months of his sentence, and it remains a solitary activity, each inmate struggling to come to grips with the inconsonance of his established (preprison) identity and his present predicament. Despite the differences in their preprison identities, however, inmates now share a common situation that affects their identities. With few exceptions, their self-dialogues involve feelings of vulnerability, discontinuity, and differentiation from other inmates, emotions that reflect both the degradations and deprivations of institutional life (cf. Garfinkel 1956; Goffman 1961; and Sykes 1958) and their continuing outsiders' perspective on the prison world. These feelings are obviously the result of everything that has happened to the inmates, but they are something else as well: they are the conditions in which every first-time, short-term inmate finds himself. They might even be called the common

attributes of the inmates' selves-in-prison, for the irrelevance of their preprison identities within the prison world reduces their self-definitions, temporarily, to the level of pure emotion. These feelings, and a consequent emphasis on the "physical self" (Zurcher 1977, 176), also constitute the essential motivation for the inmates' self-insulation strategies.¹

An inmate cannot remain wholly insulated within the prison world, for a number of reasons. He simply spends too much of his time in the presence of others to avoid all interaction with them. He also recognizes that his prison image is based on incomplete and inadequate information, and that he must interact with others in order to acquire first-hand information about the prison world. His behavior in prison, moreover, is guided not only by his prison image but by a fundamental ambivalence he feels about his situation, resulting from his marginality between the prison and outside social worlds (Schmid and Jones 1987). His ambivalence has several manifestations throughout his prison career, but the most important is his conflicting desires for self-insulation and for human communication.

Managing a Dualistic Self

An inmate is able to express both directions of his ambivalence (and to address his need for more information about the prison) by drawing a distinction between his "true" identity (i.e.,

¹There are four principal components to the survival strategies of the inmates we studied, in the early months of their prison sentences. "Selective interaction" and "territorial caution" are essentially precautionary guidelines that allow inmates to increase their understanding of the prison world while minimizing danger to themselves. "Partnership" is a special friendship bond between two inmates, typically based on common backgrounds and interests (including a shared uncertainty about prison life) and strengthened by the inmates' mutual exploration of a hostile prison world. The fourth component of their strategies, impression management, is discussed in subsequent sections of this article.

especially intense at
prison.

—it's almost like your
eyes. You wonder
to this point and, you
your family gonna
ends, all the talk, and
al with that—and the
they gonna react to
n through your

his outside, preprison identity) and a "false" identity he creates for the prison world. For most of a new inmate's prison career, his preprison identity remains a "subjective" or "personal" identity while his prison identity serves as his "objective" or "social" basis for interaction in prison (see Goffman 1963; Weigert 1986). This bifurcation of his self (Figure 2) is not a conscious decision made at a single point in time, but it does represent two conscious and interdependent identity-preservation tactics, formulated through self-dialogue and refined through tentative interaction with others.

First, after coming to believe that he cannot "be himself" in prison because he would be too vulnerable, he decides to "suspend" his preprison identity for the duration of his sentence. He retains his resolve not to let prison change him, protecting himself by choosing not to reveal himself (his "true" self) to others. Expressions of a suspension of identity emerged repeatedly and consistently in both the fieldwork and interview phases of our research through such statements as

I was reserved. . . . I wouldn't be very communicative, you know. I'd try to keep conversation to a minimum. . . . I wasn't interested in getting close to anybody . . . or asking a lot of questions. You know, try to cut the conversation short . . . go my own way back to my cell or go to the library or do something.

I didn't want nobody to know too much about me. That was part of the act.

An inmate's decision to suspend his preprison identity emanates directly from his feelings of vulnerability, discontinuity and differentiation from other inmates. These emotions foster something like a "proto-sociological attitude" (Weigert, 1986, 173; see also Zurcher 1977), in which new inmates find it necessary to step outside their taken-for-granted preprison identities. Rather than viewing these identities and the everyday life experience in which they are

grounded as social constructions, however, inmates see the *prison* world as an artificial construction, and judge their "naturally occurring" preprison identities to be out of place within this construction. By attempting to suspend his preprison identity for the time that he spends in prison an inmate believes that he will again "be his old self" after his release.

While he is in confinement, an inmate's decision to suspend his identity leaves him with little or no basis for interaction. His second identity tactic, then, is the creation of an identity that allows him to interact, however cautiously, with others. This tactic consists of his increasingly sophisticated impression management skills (Goffman 1959;² Schlenker 1980), which are initially designed simply to hide his vulnerability, but which gradually evolve into an alternative identity felt to be more suitable to the prison world. The character of the presented identity is remarkably similar from inmate to inmate:

Well, I learned that you can't act like—you can't get the attitude where you are better than they are. Even where you might be better than them, you can't strut around like you are. Basically, you can't stick out. You don't stare at people and things like that. I knew a lot of these things from talking to people and I figured them out by myself. I sat down and figured out just what kind of attitude I'm going to have to take.

Most people out here learn to be tough, whether they can back it up or not. If you don't learn to be tough, you will definitely pay for it. This toughness can be demonstrated through a mean look, tough language, or an extremely big build. . . . One important thing is never to let your guard down.

An inmate's prison identity, as an inauthentic presentation of self, is not in itself a form of

²Recall from reading 13 Goffman's concepts of expressions given and expressions given off—these are important components of impression management. —Ed.

identity tr
identity c
simply wl
in prison.
vival in a
nonethele
any other
and it mu
and valid
at prison
ers are li
image fro
serving o
Through
ping, thro
lective in
understar
prisoners
move, ho
he is diff
knows th
ent from t
His initia
observati
pears to
the ident
pression
Impre
are not ex
mate, lik
presentir
upon hi
prison id
experien
strength,
prison i
prison d
which it
ceived c
death. F
manager
consciou
before o
tion to s
contact,

structions, however, included as an artificial construction "naturally occurring" out of place within attempting to suspend his time that he spends lives that he will again release.

ment, an inmate's identity leaves him with interaction. His second creation of an identity interact, however cause tactic consists of his and impression management (Schlenker 1980), used simply to hide his gradually evolve into felt to be more suitable character of the pre-remarkably similar from in-

can't act like—you can't you are better than they might be better than them, like you are. Basically, don't stare at people and a lot of these things from figured them out by my-ured out just what kind have to take.

learn to be tough, whether not. If you don't learn to initially pay for it. This onstrated through a guage, or an extremely big ant thing is never to let

entity, as an inauthentic not in itself a form of

man's concepts of expressions off—these are important component. —Ed.

identity transformation but is rather a form of identity construction. His prison identity is simply who he must pretend to be while he is in prison. It is a false identity created for survival in an artificial world. But this identity nonetheless emerges in the same manner as any other identity: it is learned from others, and it must be presented to, negotiated with, and validated by others. A new inmate arrives at prison with a general image of what prisoners are like, and he begins to flesh out this image from the day of his arrival, warily observing others just as they are observing him. Through watching others, through eavesdropping, through cautious conversation and selective interaction, a new inmate refines his understanding of what maximum security prisoners look like, how they talk, how they move, how they act. Despite his belief that he is different from these other prisoners, he knows that he cannot appear to be too different from them, if he is to hide his vulnerability. His initial image of other prisoners, his early observations, and his concern over how he appears to others thus provide a foundation for the identity he gradually creates through impression management.

Impression management skills, of course, are not exclusive to the prison world; a new inmate, like anyone else, has had experience in presenting a "front" to others, and he draws upon his experience in the creation of his prison identity. He has undoubtedly even had experience in projecting the very attributes—strength, stoicism, aplomb—required by his prison identity. Impression management in prison differs, however, in the totality with which it governs interactions and in the perceived costs of failure: humiliation, assault, or death. For these reasons the entire impression management process becomes a more highly conscious endeavor. When presenting himself before others, a new inmate pays close attention to such minute details of his front as eye contact, posture, and manner of walking:

I finally got out of orientation. I was going out with the main population, going down to get my meals and things. The main thing is not to stare at a bunch of people, you know. I tried to just look ahead, you know, not stare at people. 'Cause I didn't really know; I just had to learn a little at a time.

The way you look seems to be very important. The feeling is you shouldn't smile, that a frown is much more appropriate. The eyes are very important. You should never look away; it is considered a sign of weakness. Either stare straight ahead, look around, or look the person dead in the eyes. The way you walk is important. You shouldn't walk too fast; they might think you were scared and in a hurry to get away.

To create an appropriate embodiment (Stone 1962; Weigert 1986) of their prison identities, some new inmates devote long hours to weightlifting or other body-building exercises, and virtually all of them relinquish their civilian clothes—which might express their pre-prison identities—in favor of the standard issue clothing that most inmates wear. Whenever a new inmate is open to the view of other inmates, in fact, he is likely to relinquish most overt symbols of his individuality, in favor of a standard issue "prison inmate" appearance.

By acting self-consciously, of course, a new inmate runs the risk of exposing the fact that he is acting. But he sees no alternative to playing his part better; he cannot "not act" because that too would expose the vulnerability of his "true" identity. He thus sees every new prison experience, every new territory that he is allowed to explore, as a test of his impression management skills. Every nonconfrontive encounter with another inmate symbolizes his success at these skills, but it is also a social validation of his prison identity. Eventually he comes to see that many, perhaps most, inmates are engaging in the same kind of inauthentic presentations of self (cf. Glaser and Strauss 1964). Their identities are as "false" as his, ar

their validations of his identity may be equally false. But he realizes that he is powerless to change this state of affairs, and that he must continue to present his prison identity for as long as he remains in prison.

A first-time inmate enters prison as an outsider, and it is from an outsider's perspective that he initially creates his prison identity. In contrast to this suspended preprison identity, his prison identity is a *shared* identity, because it is modeled on his observations of other inmates. Like those of more experienced prisoners, his prison identity is tied directly to the social role of "prison inmate" (cf. Scheff 1970; Solomon 1970); because he is an outsider, however, his prison identity is also severely limited by his narrow understanding of that role. It is based on an outsider's stereotype of who a maximum security inmate is and what he acts like. It is, nonetheless, a *structural* identity (Weigert 1968), created to address his outsider's institutional problems of social isolation and inadequate information about the prison world.

By the middle of his sentence, a new inmate comes to adopt what is essentially an insider's perspective on the prison world. His prison image has evolved to the point where it is dominated by the theme of boredom rather than violence. (The possibility of violence is still acknowledged and feared, but those violent incidents that do occur have been redefined as the consequences of prison norm violations rather than as random predatory acts; see Schmid and Jones 1990.) His survival strategy, although still extant, has been supplemented by such general adaptation techniques as legal and illegal diversionary activities and conscious efforts to suppress his thoughts about the outside world (Figure 1). His impression management tactics have become second nature rather than self-conscious, as he routinely interacts with others in terms of his prison identity.

An inmate's suspension of his preprison identity, of course, is never absolute, and the separation between his suspended identity and his prison identity is never complete. He continues to interact with his visitors at least partially in terms of his preprison identity, and he is likely to have acquired at least one inmate "partner" with whom he interacts in terms of his preprison as well as his prison identity. During times of introspection, however—which take place less frequently but do not disappear—he generally continues to think of himself as being the same person he was before he came to prison. But it is also during these periods of self-dialogue that he begins to have doubts about his ability to revive his suspended identity.

That's what I worry about a lot. Because I didn't want to change. . . . I'm still fighting it, 'cause from what I understood, before, I wasn't that bad—I wasn't even violent. But I have people say stuff to me now, before I used to say "O.k., o.k."—but now it seems like I got to eye them back, you know.

. . . .

I don't know, but I may be losing touch with the outside. I am feeling real strange during visits, very uncomfortable. I just can't seem to be myself, although I am not really sure what myself is all about. My mind really seems to be glued to the inside of these walls. I can't even really comprehend the outside. I haven't even been here three months, and I feel like I'm starting to lose it. Maybe I'm just paranoid. But during these visits I really feel like I'm acting. I'm groping for the right words, always trying to keep the conversation going. Maybe I'm just trying to present a picture that will relieve the minds of my visitors, I just don't know.

. . . .

I realized that strength is going to be an important factor whether I'm going to turn into a cold person or whether I'm going to keep my humanitarian point of view. I know it is going to be an internal war. It's going to take a lot of energy to do that. . . . I just keep telling myself that you

got
wh
lose
tra

At th
prepr
tity a
ness"
given
grou
ograp
perfo
of his
tome
priso
and r
long-

At
char
foun
priso
a "ro
mate
tity
statu
thro
side
trans
inma
front
acter
insti
of th

³Clen
ing o
toms,
mates
part
inma
(mea
these
ture-
are n
ident
senti

of his preprison absolute, and the suspended identity never complete. He has visitors at least on his prison identity, and at least one inmate he interacts in as well as his prison respectation, how- ever frequently but ally continues to be the same person he is on. But it is also a dialogue that he has his ability to re-

ot. Because I didn't lighting it, 'cause ore, I wasn't that But I have people used to say "O.k., I got to eye them

using touch with the nge during visits, n't seem to be my- sure what myself seems to be glued can't even really aven't even been like I'm starting to oid. But during 'm acting. I'm grop- ys trying to keep 'be I'm just trying to lieve the minds of v.

ng to be an impor- g to turn into a cold ; to keep my hu- now it is going to be take a lot of energy ing myself that you

gotta do it and sometimes you get to the point where you don't care anymore. You just kinda lose it and you get so full of hate, so full of frustration, it gets wound up in your head a lot.

At this point, both the inmate's suspended preprison identity and his created prison identity are part of his "performance consciousness" (Schechner 1985), although they are not given equal value. His preprison identity is grounded primarily in the memory of his biography (Weigert 1986) rather than in self-performance. His concern, during the middle of his sentence, is that he has become so accustomed to dealing with others in terms of his prison identity—that he has been presenting and receiving affirmation of this identity for so long—that it is becoming his "true" identity.³

An inmate's fear that he is becoming the character he has been presenting is not unfounded. All of his interactions within the prison world indicate the strong likelihood of a "role-person merger" (Turner 1978). An inmate views his presentation of his prison identity as a necessary expression of his inmate status. Unlike situational identities presented through impression management in the outside world, performance of the inmate role is transsituational and continuous. For a new inmate, prison consists almost exclusively of front regions, in which he must remain in character. As long as he is in the maximum security institution, he remains in at least partial view of the audience for which his prison identity

³Clemmer (1958, 299) has defined "prisonization" as the "taking on in greater or less degree of the folkways, mores, customs, and general culture of the penitentiary." Yet new inmates begin to "take on" these things almost immediately, as part of the impression they are attempting to present to other inmates. Thus, we would argue instead that prisonization (meaning assimilation to the prison world) begins to occur for these inmates when their prison identities become second nature—when their expressions of prison norms and customs are no longer based on self-conscious acting. A new inmate's identity concerns, during the middle of his sentence, are essentially a recognition of this assimilation.

is intended: other prison inmates. Moreover, because the stakes of his performance are so high, there is little room for self-mockery or other forms of role distance (Coser 1966; Ungar 1984) from his prison identity, and there is little possibility that an inmate's performance will be "punctured" (Adler and Adler 1989) by his partner or other prison acquaintances. And because his presentation of his prison identity is continuous, he also receives continuous affirmation of his identity from others—affirmation that becomes more significant in light of the fact that he also remains removed from day-to-day reaffirmation of his preprison identity by his associates in the outside world. The inauthenticity of the process is beside the point: Stone's (1962, 93) observation that "one's identity is established when others place him as a social object by assigning him the same words of identity that he appropriates for himself or announces" remains sound even when both the announcements and the placements are recognized as false.

Standing against these various forms of support for a inmate's prison identity are the inmate's resolve not to be changed in prison, the fact that his sentence is relatively brief (though many new inmates lose sight of this brevity during the middle of their careers) and the limited reaffirmation of his preprison identity that he receives from outsiders and from his partner. These are not insubstantial resources, but nor do they guarantee an inmate's future ability to discard his prison identity and revive the one he has suspended.

Identity Dialectic

When an inmate's concerns about his identity first emerge, there is little that he can do about them. He recognizes that he has no choice but to present his prison identity so, following the insider's perspective he has now adopted, he

consciously attempts to suppress his concerns. Eventually, however, he must begin to consider seriously his capacity to revive his suspended identity: his identity concerns, and his belief that he must deal with them, become particularly acute if he is transferred to the minimum security unit of the prison for the final months of his sentence.⁴ At the conclusion of his prison career, an inmate shifts back toward an outsider's perspective on the prison world (see Figure 1); this shift involves the dissipation of his maximum security adaptation strategy, further revision of his prison image, reconstruction of an image of the outside world, and the initial development of an outside plan.⁵ The inmate's efforts to revive his suspended identity are part of his shift in perspectives.

It is primarily through a renewed self-dialogue that the inmate struggles to revive his suspended identity—a struggle that amounts to a dialectic between his suspended identity and his prison identity. Through self-dialogue he recognizes, and tries to confront, the extent to which these two identities really do differ. He again tries to differentiate himself from maximum security inmates.

There seems to be a concern with the inmates here to be able to distinguish . . . themselves from the other inmates. That is—they feel they are above the others. . . . Although they may associate with each other, it still seems important to degrade the majority here.

⁴Not all prisoners participate in this unit; inmates must apply for transfer to the unit, and their acceptance depends both on the crimes for which they were sentenced and staff evaluation of their potential for success in the unit. Our analysis focuses on those inmates who are transferred.

⁵There are three features of the minimum security unit that facilitate this shift in perspectives: a more open physical and social environment; the fact that the unit lies just outside the prison wall (so that an inmate who is transferred is also physically removed from the maximum security prison); and greater opportunity for direct contact with the outside world, through greater access to telephones, an unrestricted visitor list, unrestricted visiting hours and, eventually, weekend furloughs.

And he does have some success in freeing himself from his prison identity.

Well, I think I am starting to soften up a little bit. I believe the identity I picked up in the prison is starting to leave me now that I have left the world of the [maximum security] joint. I find myself becoming more and more involved with the happenings of the outside world. I am even getting anxious to go out and see the sights, just to get away from this place.

But he recognizes that he *has* changed in prison, and that these changes run deeper than the mask he has been presenting to others. He has not returned to his "old self" simply because his impression management skills are used less frequently in minimum security. He raises the question—though he cannot answer it—of how permanent these changes are. He wonders how much his family and friends will see him as having changed. As stated by one of our interview respondents:

I know I've changed a little bit. I just want to realize how the people I know are going to see it, because they [will] be able to see it more than I can see it. . . . Sometimes I just want to go somewhere and hide.

He speculates about how much the outside world—especially his own network of outside relationships—has changed in his absence. (It is his life, not those of his family and friends, that has been suspended during his prison sentence; he knows that changes have occurred in the outside world, and he suspects that some of these changes may have been withheld from him, intentionally or otherwise.) He has questions, if not serious doubts, about his ability to "make it" on the outside, especially concerning his relationships with others; he knows, in any case, that he cannot simply return to the outside world as if nothing has happened. Above all, he repeatedly confronts the question of who he is, and who he will be in the outside world.

An in
like his
prison c
The iden
in contr
learned f
periods o
siders ar
atic mar
mination
another)
new que
other, or
is, then,
mate's i
fronts th
arrives a
is, basec
dialogue
release i
prepriso

Postpri

Because
outcome
not prov
identity.
some of
come. R
by outs
which o
changed
efforts to
efforts a
lection o
tempts,
he was l
to aban

⁶This is an
changing j
synthesis o
and the in
Schmid an

success in freeing
identity.

soften up a little
picked up in the
ie now that I have
um security] joint.
e and more in-
s of the outside
xious to go out
et away from this

e has changed in
ges run deeper than
enting to others. He
ld self" simply be-
agement skills are
imum security. He
h he cannot answer
se changes are. He
ily and friends will
As stated by one of

bit. I just want to re-
w are going to see it,
to see it more than I
just want to go some-

much the outside
network of outside
d in his absence. (It
family and friends,
during his prison
changes have oc-
ld, and he suspects
es may have been
ntionally or other-
not serious doubts,
it" on the outside,
relationships with
ase, that he cannot
le world as if noth-
all, he repeatedly
who he is, and who
orld.

An inmate's struggle with these questions, like his self-dialogue at the beginning of his prison career, is necessarily a solitary activity. The identity he claims at the time of his release, in contrast to his prison identity, cannot be learned from other inmates. Also like his earlier periods of self-dialogue, the questions he considers are not approached in a rational systematic manner. The process is more one of rumination—of pondering one question until another replaces it, and then contemplating the new question until it is replaced by still another, or suppressed from his thoughts. There is, then, no final resolution to any of the inmate's identity questions. Each inmate confronts these questions in his own way, and each arrives at his own understanding of who he is, based on this unfinished, unresolved self-dialogue. In every case, however, an inmate's release identity is a synthesis of his suspended preprison identity and his prison identity.⁶

Postprison Identity

Because each inmate's release identity is the outcome of his own identity dialectic, we cannot provide a profile of the "typical" release identity. But our data do allow us to specify some of the conditions that affect this outcome. Reaffirmations of his preprison identity by outsiders—visits and furloughs during which others interact with him as if he has not changed—provide powerful support for his efforts to revive his suspended identity. These efforts are also promoted by an inmate's recollection of his preprison identity (i.e., his attempts, through self-dialogue, to assess who he was before he came to prison), by his desire to abandon his prison identity, and by his gen-

⁶This is an important parallel with our analysis of the inmate's changing prison definitions: his concluding prison image is a synthesis of the image he formulates before coming to prison and the image he holds at the middle of his prison career; see Schmid and Jones, 1990.

eral shift back toward an outsider's perspective. But there are also several factors that favor his prison identity, including his continued use of diversionary activities; his continued periodic efforts to suppress thoughts about the outside world; his continued ability to use prison impression management skills; and his continuing sense of injustice about the treatment he has received. Strained or cautious interactions with outsiders, or unfulfilled furlough expectations, inhibit the revival of his preprison identity. And he faces direct, experiential evidence that he has changed: when a minimum security resident recognizes that he is now completely unaffected by reports of violent incidents in maximum security, he acknowledges that he is no longer the same person that he was when he entered prison. Turner (1978, 1) has suggested three criteria for role-person merger: "failure of role compartmentalization, resistance to abandoning a role in the face of advantageous alternative roles, and the acquisition of role-appropriate attitudes"; at the time of their release from prison, the inmates we studied had already accrued some experience with each of these criteria.

Just as we cannot define a typical release identity, we cannot predict these inmates' future, postprison identities, not only because we have restricted our analysis to their prison experiences but because each inmate's future identity is inherently unpredictable. What effect an ex-inmate's prison experience has on his identity depends on how he, in interaction with others, defines this experience. Some of the men we have studied will be returned to prison in the future; others will not. But all will have been changed by their prison experiences. They entered the prison world fearing for their lives; they depart with the knowledge that they have survived. On the one hand, these men are undoubtedly stronger persons by virtue of this accomplishment. On the other hand, the same tactics that enabled them to survive the prison world can be called upon,

appropriately or not, in difficult situations in the outside world. To the extent that these men draw upon their prison survival tactics to cope with the hardships of the outside world—to the extent that their prison behavior becomes a meaningful part of their “role repertoire” (Turner 1978) in their everyday lives—their prison identities will have become inseparable from their “true” identities. . . .

References

- Adler, Patricia A., and Peter Adler. 1989. “The Gloried Self: The Aggrandizement and the Construction of Self.” *Social Psychology Quarterly* 52: 299–310.
- Berger, Peter L. 1963. *Invitation to Sociology: A Humanistic Perspective*. Garden City, NY: Doubleday Anchor Books.
- Blumer, Herbert. 1972. “Action vs. Interaction: Review of *Relations in Public* by Erving Goffman.” *Transaction* 9: 50–53.
- Boulding, Kenneth. 1961. *The Image*. Ann Arbor: University of Michigan Press.
- Clemmer, Donald. 1958. *The Prison Community*. New York: Holt, Rinehart & Winston.
- Coser, R. 1966. “Role Distance, Sociological Ambivalence and Traditional Status Systems.” *American Journal of Sociology* 72: 173–187.
- Goffman, Erving. 1961. *Asylums*. Garden City, NY: Doubleday Anchor Books.
- . 1959. *The Presentation of Self in Everyday Life*. Garden City, NY: Doubleday Anchor Books.
- . 1963. *Stigma: Notes on the Management of Spoiled Identity*. Englewood Cliffs, NJ: Prentice-Hall.
- Irwin, John. 1970. *The Felon*. Englewood Cliffs, NJ: Prentice-Hall.
- Lewis, David J. 1979. “A Social Behaviorist Interpretation of the Median I.” *American Journal of Sociology* 84: 261–287.
- Schechner, Richard. 1985. *Between Theater and Anthropology*. Philadelphia: University of Pennsylvania Press.
- Scheff, Thomas. 1970. “On the Concepts of Identity and Social Relationships.” Pp. 193–207 in T. Shibusani (ed.), *Human Nature and Collective Behavior*. Englewood Cliffs, NJ: Prentice-Hall.
- Schlenker, B. 1980. *Impression Management: The Self Concept, Social Identity and Interpersonal Relations*. Belmont, CA: Wadsworth.
- Schmid, Thomas, and Richard Jones. 1987. “Ambivalent Actions: Prison Adaptation Strategies of New Inmates.” American Society of Criminology, annual meetings, Montreal, Quebec.
- Schmid, Thomas, and Richard Jones. 1990. “Experiential Orientations to the Prison Experience: The Case of First-Time, Short-Term Inmates.” Pp. 189–210 in Gale Miller and James A. Holstein (eds.), *Perspectives on Social Problems*. Greenwich, CT: JAI Press.
- Solomon, David N. 1970. “Role and Self-Conception: Adaptation and Change in Occupations.” Pp. 286–300 in T. Shibusani (ed.), *Human Nature and Collective Behavior*. Englewood Cliffs, NJ: Prentice-Hall.
- Stone, Gregory P. 1962. “Appearance and the Self.” Pp. 86–118 in Arnold Rose (ed.), *Human Behavior and Social Processes*. Boston: Houghton Mifflin.
- Sykes, Gresham. 1958. *The Society of Captives: A Study of a Maximum Security Prison*. Princeton, NJ: Princeton University Press.
- Turner, Ralph H. 1978. “The Role and the Person.” *American Journal of Sociology* 84: 1–23.
- Ungar, Sheldon. 1984. “Self-Mockery: An Alternative Form of Self-Presentation.” *Symbolic Interaction* 7: 121–133.
- Weigert, Andrew J. 1986. “The Social Production of Identity: Metatheoretical Foundations.” *Sociological Quarterly* 27: 165–183.
- Zurcher, Louis A. 1977. *The Mutable Self*. Beverly Hills, CA: Sage.

Questions

1. Define the following terms, as used by Schmid and Jones in the article.
 - a. rumination
 - b. inauthentic presentation of self

Between Theater and An-
 : University of Pennsyl-

the Concepts of Identity
 ips." Pp. 193-207 in T.
Nature and Collective Be-
 s, NJ: Prentice-Hall.

ision Management: The Self
and Interpersonal Relations.
 th.

chard Jones. 1987. "Am-
 Adaptation Strategies of
 can Society of Criminol-
 Montreal, Quebec.

ard Jones. 1990. "Experi-
 ne Prison Experience: The
 hort-Term Inmates." Pp.
 r and James A. Holstein
ocial Problems. Greenwich,

Role and Self-Conception:
 ge in Occupations." Pp.
 ani (ed.), *Human Nature*
 : Englewood Cliffs, NJ:

Appearance and the Self."
 ose (ed.), *Human Behavior*
 oston: Houghton Mifflin.
he Society of Captives: A
ecurity Prison. Princeton,
 ty Press.

he Role and the Person."
ology 84: 1-23.

elf-Mockery: An Alterna-
 ntation." *Symbolic Interac-*

"The Social Production of
 al Foundations." *Sociolog-*
 83.

The Mutable Self. Beverly

- c. performance consciousness
- d. identity dialectic
- e. proto-sociological attitude

2. How do Schmid and Jones distinguish between "identity transformation" and "identity construction"?
3. In what ways, if any, do you think prison might have a different effect on women's identity than on men's identity? Explain.
4. Identify the parallels between identity and transformation in prison and the implicit identity transformation undergone by kids as they are introduced to street culture (as described by Anderson in reading 12).