

Minor Key Signatures

Any key signature can also represent a minor key. Minor keys share a key signature with a Major key. Because of this we refer to them as the **RELATIVE** minor. The name of the key, such as C major, tells us that C is the most important pitch in that key. However, in A minor, which shares the same key signature (no sharps or flats), the most important note is A.

Treble clef



a minor e minor b minor f# minor c# minor g# minor d# minor a# minor

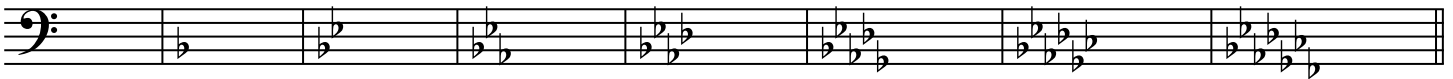


a minor d minor g minor c minor f minor b♭ minor e♭ minor a♭ minor

Bass clef



a minor e minor b minor F# minor c# minor g# minor d# minor a# minor



a minor d minor g minor c minor f minor b♭ minor e♭ minor a♭ minor