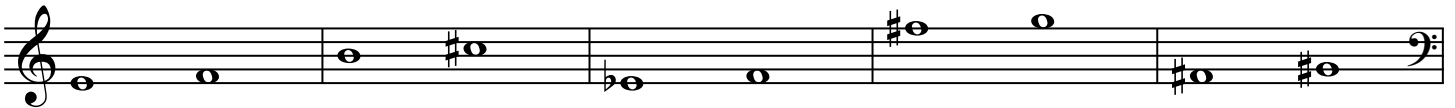


Sharps, Flats and Naturals - Half Steps and Whole steps WORKSHEET

COVER THE ANSWERS BELOW.

Identify each example as a half step (HS) or Whole Step (WS):



Answers:

Treble Clef: HS WS HS WS WS
HS WS WS HS WS

Bass Clef: WS HS HS HS HS
WS HS HS WS HS