

Harmonic Minor Scales

Notice that each scale uses the accidentals used in the Key Signature with the same name BUT you RAISE the 7th scale degree one half step.

Harmonic minor scales from sharp key signatures in the Bass clef.



a minor (no sharps)

e minor (1 sharp)



b minor (2 sharps)

f# minor (3 sharps)



c# minor (4 sharps)

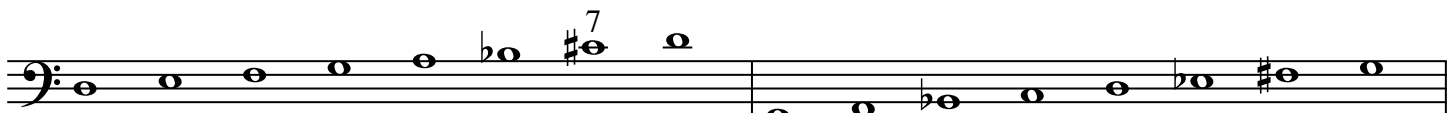
g# minor (5 sharps)



d# minor (6 sharps)

a# minor (7 sharps)

Harmonic minor scales from flat key signatures in the Bass clef:



d minor (1 flat)

g minor (2 flats)



c minor (3 flats)

f minor (4 flats)



bb minor (5 flats)

eb minor (6 flats)



ab minor (7 flats)