

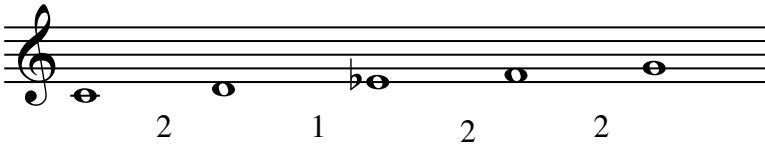
Spelling Minor Scales

There are two easy ways to spell minor scales.

USING HALF STEPS:

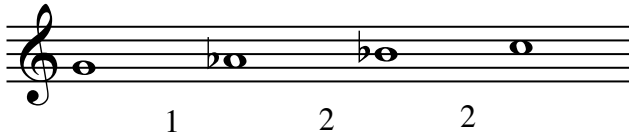
The following pattern will spell the first five notes of ANY minor scale:

2 - 1 - 2 - 2

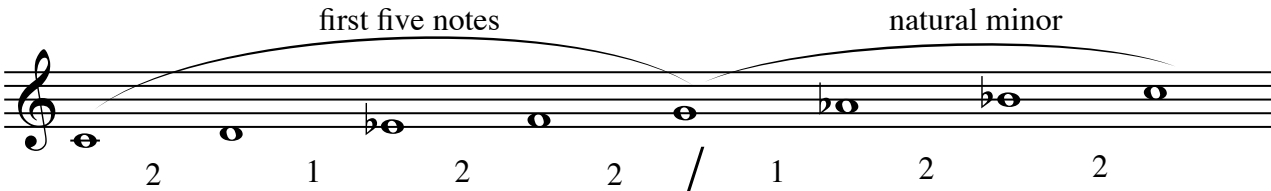


To spell the NATURAL minor scale, complete the scale with the pattern:

1 - 2 - 2



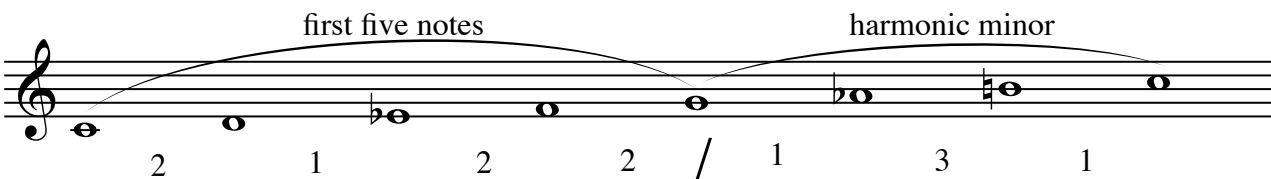
So the complete Natural minor scale would be:



To spell a HARMONIC minor scale, first begin with the five note pattern for all minor scales and then complete the scale with the pattern:

1 - 3 - 1

So the complete Harmonic minor scale would be:



To spell a MELODIC minor scale, first begin with the five note pattern for all minor scales and then complete the scale with the pattern:

2 - 2 - 1

So the complete Harmonic minor scale would be:

The image shows a musical staff in treble clef with a key signature of one flat (B-flat). The scale is divided into two parts by a slash. The first part, labeled "first five notes", consists of five notes: G4 (quarter), A4 (quarter), B-flat4 (quarter), C5 (quarter), and D5 (quarter). The second part, labeled "melodic minor", consists of five notes: D5 (quarter), E5 (quarter), F5 (quarter), G5 (quarter), and A5 (quarter). Fingering numbers are placed below the notes: 2, 1, 2, 2, /, 2, 2, 1.